

## Press release

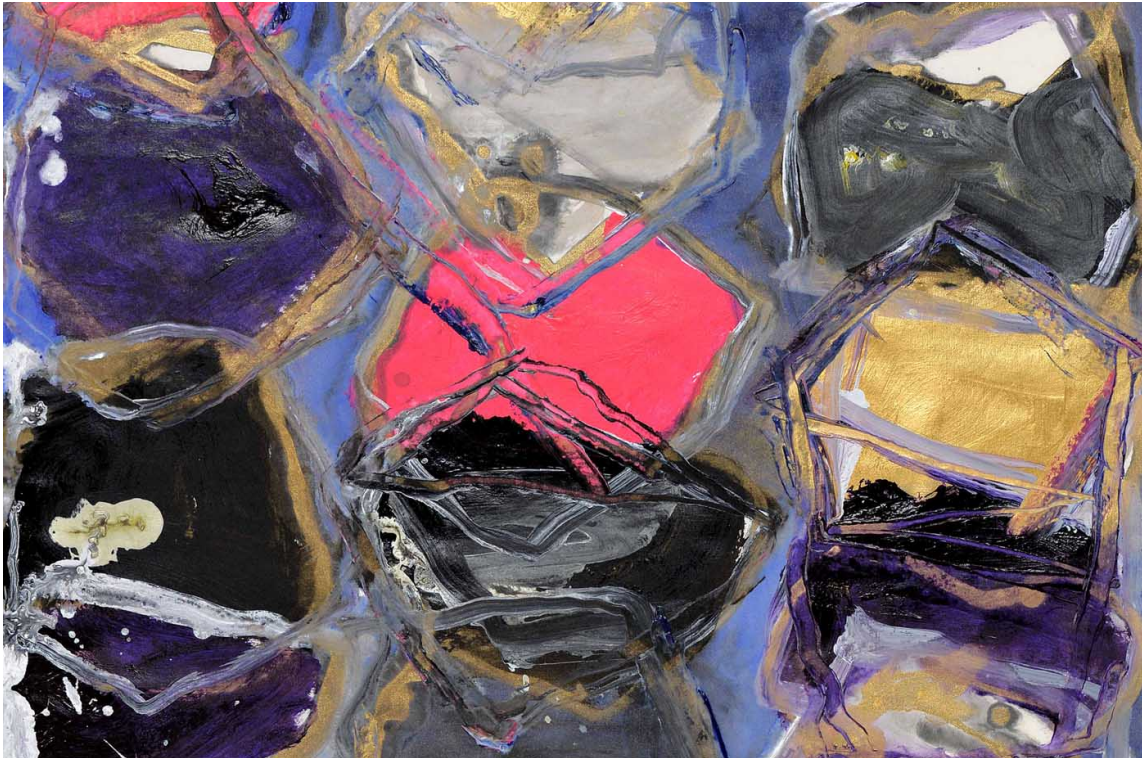
Wei Ligang

Wei Ligang

Location : Galerie Penthievre, 24 rue de Penthievre Paris 8e

From 13 February 2015 to 04 April 2015

Opening date 12 February 2015



## Press Release

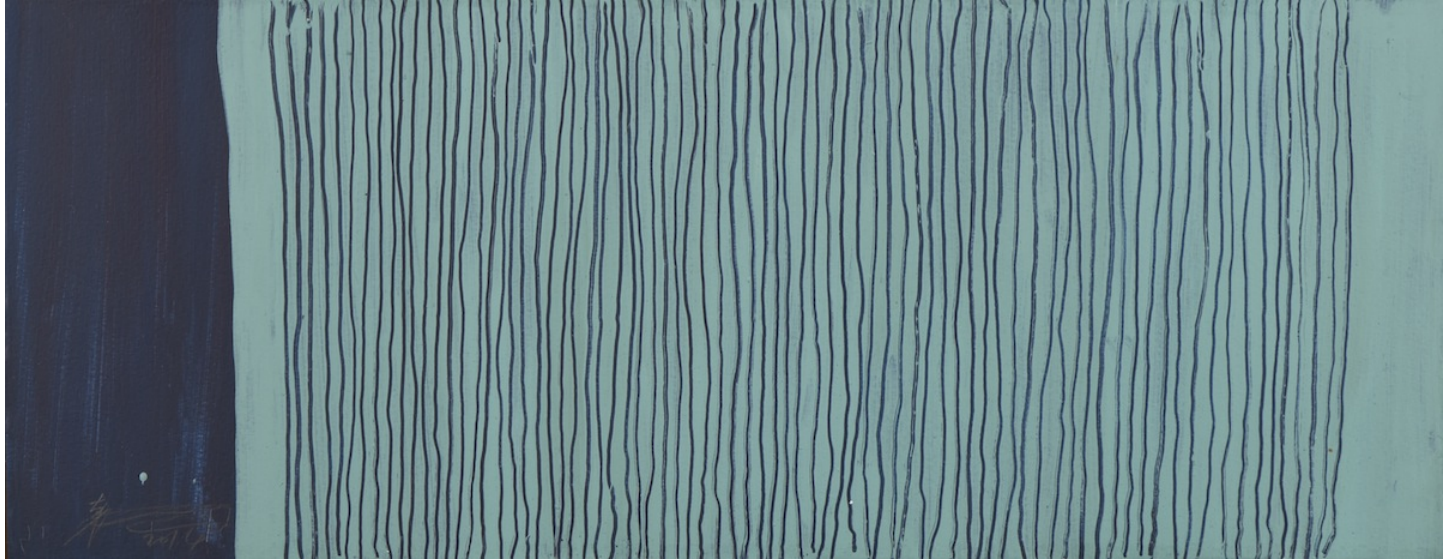
The Gallery Françoise Livinec opens a new space dedicated to a monographic exhibition by Wei Ligang for the Chinese New Year, at the 24, Penthievre Street in Paris 8th arrondissement, on February 12, 2015.

Placing itself in a cultural course on the occasion of the Chinese New Year, the Gallery Françoise Livinec will welcome you in its new space. You will discover 40 previously unseen works of the Chinese artist Wei Ligang. Moreover, he has carte blanche to present one of his masters, Chuang Che, big name in Chinese modern painting, between Orient and Occident, at 29, Matignon Avenue. The internationally renowned artist Wei Ligang opens this new place by presenting works created during his artistic residence in the Ecole des filles in Huelgoat. These works responds to the writings of Victor Segalen, famous poet and Sinologist, dead in mysterious conditions in Huelgoat. Just like him, Wei Ligang immerses himself in two cultures, Chinese and Occidental.

His master Chuang Che also combines in his works the legacy of Chinese traditional techniques and Abstract Expressionism influence, which he discovered during his stays in Europe and in United States.

Their works are among others exhibited in the National Museum of Taipei, in the Detroit Art Museum, in the Hong Kong Art Museum, and in numerous galleries and private collections around the world. A work of Wei Ligang has just been added to the collections of the Musée Cernuschi.

# Wei Ligang



## Wei Ligang

*Autumn appeal, 2014*

Ink and acrylic on rice paper

25 x 65 cm

Signed on the left

INV Nbr. WL15110005/9/28



Wei Ligang



**Wei Ligang**

*Snow falling on the boats on the seine II, 2013*

ink and acrylic on rice paper

68 x 68 cm

Signed lower right

INV Nbr. WL15110039/4/11

**Françoise  
Livinec**

24, rue de Penthièvre  
75008 Paris

+33 (0)1 40 07 58 09  
[contact@francoiselivinec.com](mailto:contact@francoiselivinec.com)  
[www.francoiselivinec.com](http://www.francoiselivinec.com)

## Wei Ligang



### Wei Ligang

*Blue flower 1*, 2013

Ink and acrylique on rice paper

130 x 96,5 cm

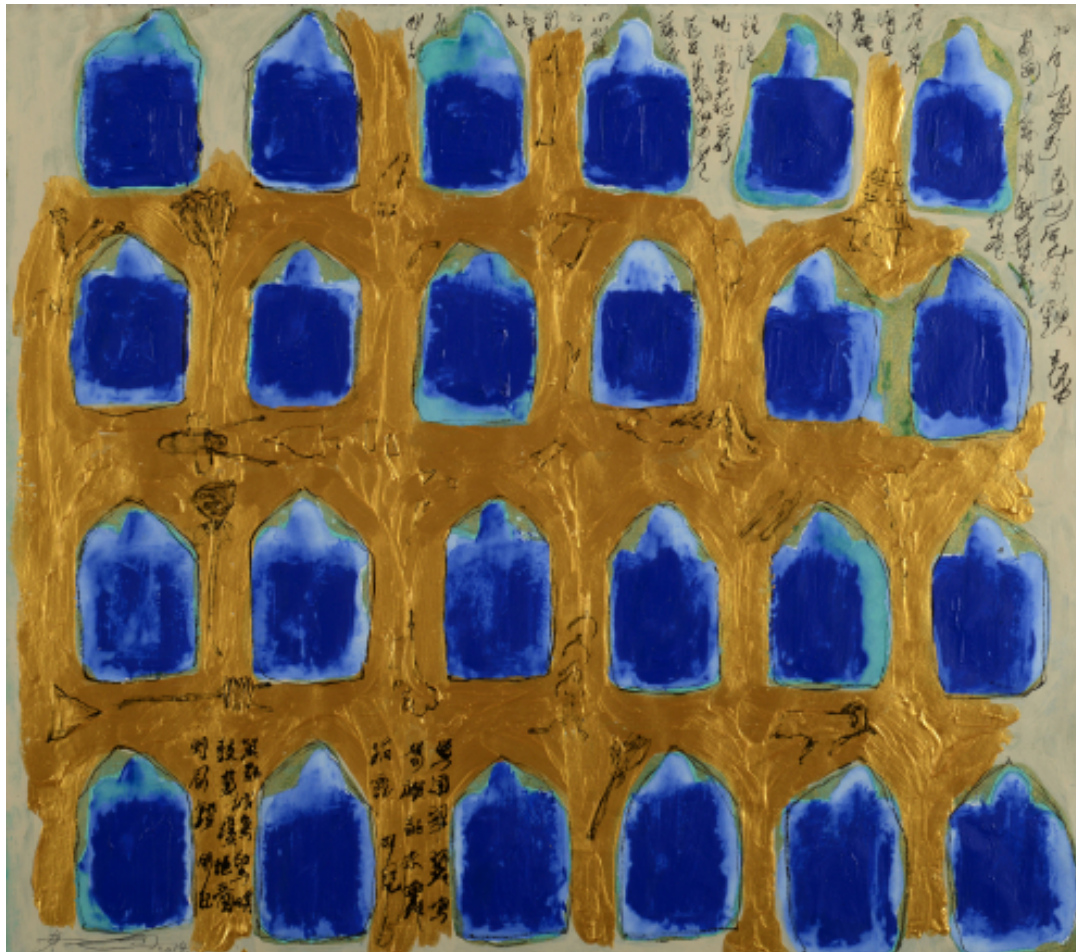
INV Nbr. WL15110029/2/2

**Françoise  
Livinec**

24, rue de Penthièvre  
75008 Paris

+33 (0)1 40 07 58 09  
[contact@francoiselivinec.com](mailto:contact@francoiselivinec.com)  
[www.francoiselivinec.com](http://www.francoiselivinec.com)

## Wei Ligang



### Wei Ligang

*Palace*, 2014

INV Nbr. WLG2014\_1

**Françoise  
Livinec**

24, rue de Penthièvre  
75008 Paris

+33 (0)1 40 07 58 09  
[contact@francoiselivinec.com](mailto:contact@francoiselivinec.com)  
[www.francoiselivinec.com](http://www.francoiselivinec.com)



## Wei Ligang



### Wei Ligang

*Peacock Blue*, 2014

Ink and acrylic on rice paper

138 x 68 cm

Signed lower left

INV Nbr. WL15110030/10/2

**Françoise  
Livinec**

24, rue de Penthièvre  
75008 Paris

+33 (0)1 40 07 58 09  
[contact@francoiselivinec.com](mailto:contact@francoiselivinec.com)  
[www.francoiselivinec.com](http://www.francoiselivinec.com)