

Press Release

The fire is present in the fourth elements of Empedocles (earth, water, fire, air) as in the fifth elements of the Chinese Taoist culture (metal, wood, water, fire and earth). According to Gaston Bachelard, in *La Psychanalyse du feu*, "Fire is the ultra living thing... He lives in our heart. He lives in the sky, he rises up from the depths of the substance and gives itself as a love. He shines in the paradise. He burns in hell. He is softness and torture. He is cooking and apocalypse..."

The fire doesn't have a determined form. He is always in motion. Like the artists of the Ecole des filles ? Coming from Los Angeles to Tokyo, from the Australian desert to the Jeju Island or from the towers of Seoul to the palaces of Beijing, all of them chose to exhibit their works in the Ecole des filles, next to the granitic chaos of Huelgoat. Heat source, the fire enables cooking. From soft, the material can become hard or the contrary. And the lead turn into art.

The brush of the alchemist, artist-calligrapher, Wei Ligang caught this instant of the gold flame dancing in the trees of Huelgoat. This work is an invitation to stroll on the edge of this natural and magical place, of trees, of rocks and of waters. Opening the doors of this old school, now become an art gallery opened on the world, having chosen the aesthetics of the silence of the granitic chaos.

Exhibition View



L'Attrape-Feu

L'art réenchante le monde

Jeanne Coppel, Kim Dae Soo, Andreas Dettloff, Matthieu Dorval, René Duvillier, Germaine Gardey, Bang Hai Ja, Toru Hamada, Choi Jun-Kun, Xavier Krebs, Jang Kwang Bum, Loic Le Groumellec, Wei Ligang, Bai Ming, Dorothy Napangardi, Parvathi Nayar, Kathleen Petyarre, Won Sou-Yeol, Kim Tae Ho, Li Ting Ting, Ronnie Tjampitjinpa, Jacques Villeglé

Exhibition View



L'Attrape-Feu

L'art réenchante le monde

Jeanne Coppel, Kim Dae Soo, Andreas Dettloff, Matthieu Dorval, René Duvillier, Germaine Gardey, Bang Hai Ja, Toru Hamada, Choi Jun-Kun, Xavier Krebs, Jang Kwang Bum, Loic Le Groumellec, Wei Ligang, Bai Ming, Dorothy Napangardi, Parvathi Nayar, Kathleen Petyarre, Won Sou-Yeol, Kim Tae Ho, Li Ting Ting, Ronnie Tjampitjinpa, Jacques Villeglé

Jacques Villeglé



Jacques Villeglé

L'Exote, 2014

Ink and watercolor on paper

55 x 37,5 cm

INV Nbr. JV_2014_1

**Françoise
Livinec**

24, rue de Penthièvre
75008 Paris

+33 (0)1 40 07 58 09
contact@francoiselivinec.com
www.francoiselivinec.com

Yoon-Hee



Yoon-Hee

En spirale, 2003

Pigments sur vélin d'arches

160 x 120 cm

INV Nbr. YH2003_1

**Françoise
Livinec**

24, rue de Penthièvre
75008 Paris

+33 (0)1 40 07 58 09
contact@francoiselivinec.com
www.francoiselivinec.com

Yoon-Hee



Yoon-Hee

En Spirale, 2004

Pigments sur papier vélin d'arches

INV Nbr. YH2004_2

**Françoise
Livinec**

24, rue de Penthièvre
75008 Paris

+33 (0)1 40 07 58 09
contact@francoiselivinec.com
www.francoiselivinec.com

Li Xin



Li Xin

2015.10.8 H, 2015

Oil on canvas

Diameter 150 cm

INV Nbr. LX16010003

**Françoise
Livinec**

24, rue de Penthièvre
75008 Paris

+33 (0)1 40 07 58 09
contact@francoiselivinec.com
www.francoiselivinec.com

Jeanne Coppel



Jeanne Coppel

New York City, 1968

Collage

90 x 58,5 cm

INV Nbr. JC15110002_HL

Kathleen Petyarre



Kathleen Petyarre

Bush Seeds, vers 2008

Acrylic on canvas

98 x 149 cm

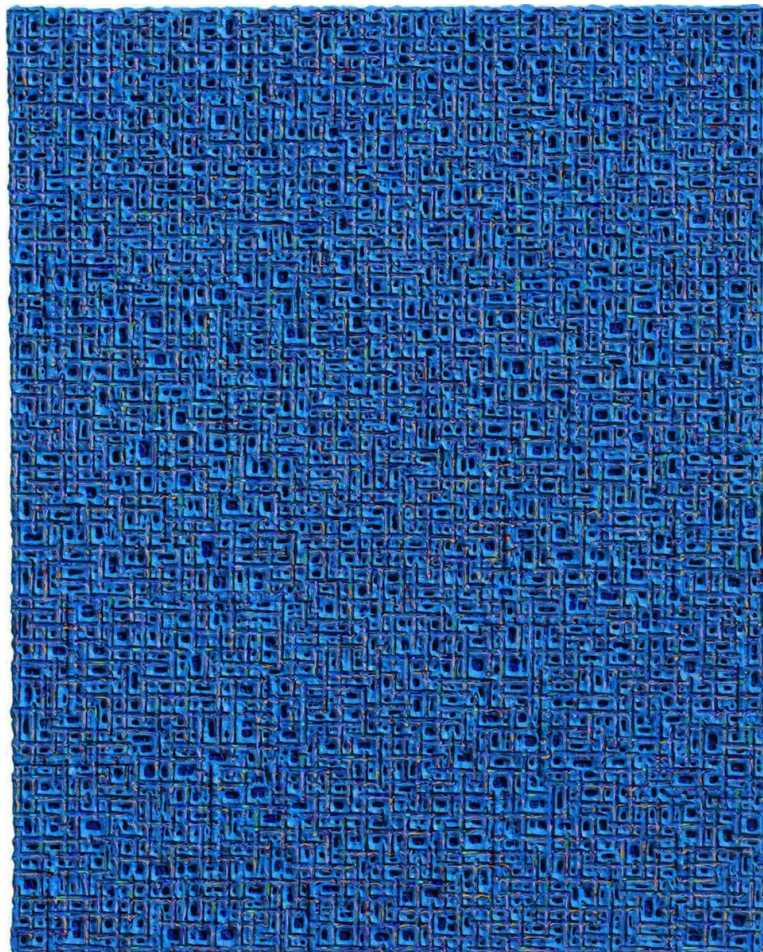
INV Nbr. KP2008_6

**Françoise
Livinec**

24, rue de Penthièvre
75008 Paris

+33 (0)1 40 07 58 09
contact@francoiselivinec.com
www.francoiselivinec.com

Kim Tae Ho



Kim Tae Ho

Internal Rhythm 2015-9, 2015

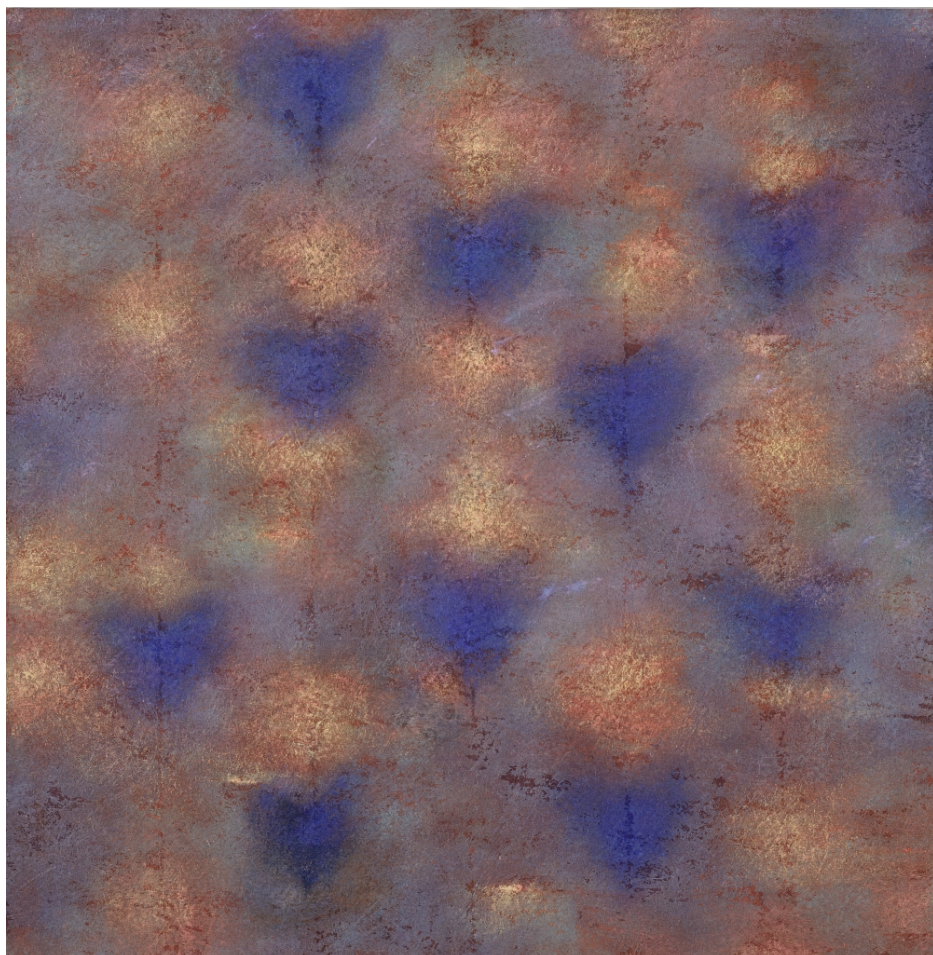
Acrylic on canvas

91,5 x 73 cm

Signed on the back

INV Nbr. KTH16010001

Bang Hai Ja



Bang Hai Ja

Terre du ciel, 2006

Natural pigments on paper

85 x 85 cm

Frame: 105 x 105 cm

Signed on the back

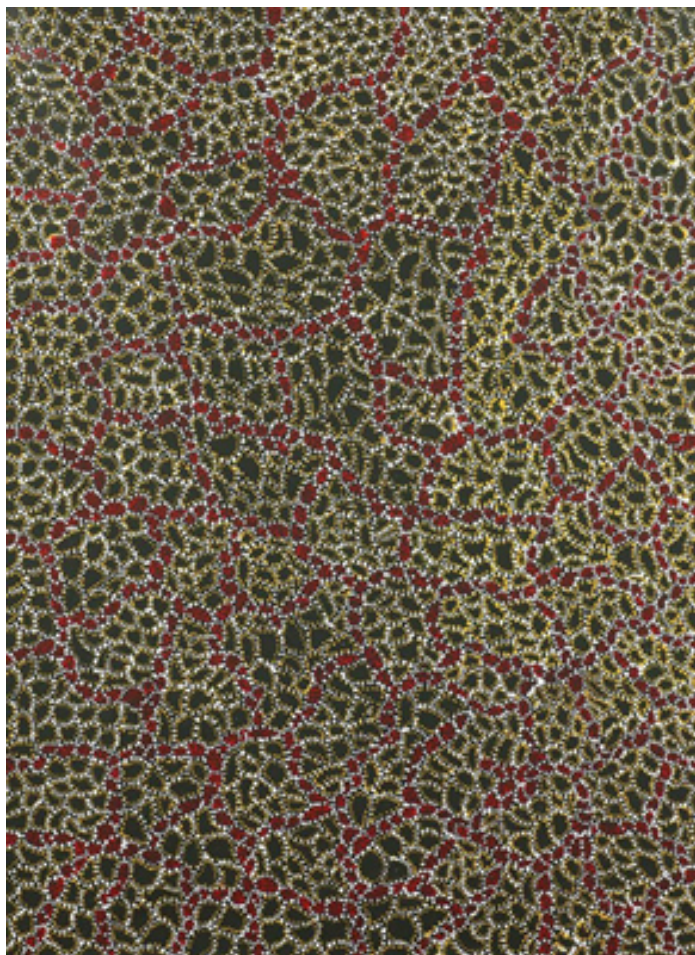
INV Nbr. BHJ15110029

**Françoise
Livinec**

24, rue de Penthièvre
75008 Paris

+33 (0)1 40 07 58 09
contact@francoiselivinec.com
www.francoiselivinec.com

Dorothy Napangardi



Dorothy Napangardi

Sans titre, vers 2009

Acrylique sur toile

INV Nbr. DN2009_4

**Françoise
Livinec**

24, rue de Penthièvre
75008 Paris

+33 (0)1 40 07 58 09
contact@francoiselivinec.com
www.francoiselivinec.com

René Duvillier



René Duvillier

Les pinces de la mer I, mars 1978

Mixed technique on canvas

90 x 120 cm

INV Nbr. RD1978_22

**Françoise
Livinec**

24, rue de Penthièvre
75008 Paris

+33 (0)1 40 07 58 09
contact@francoiselivinec.com
www.francoiselivinec.com

Kim Dae Soo



Kim Dae Soo

Like positive, 1999

1/5

Tirage argentique

Edition of 5 ex

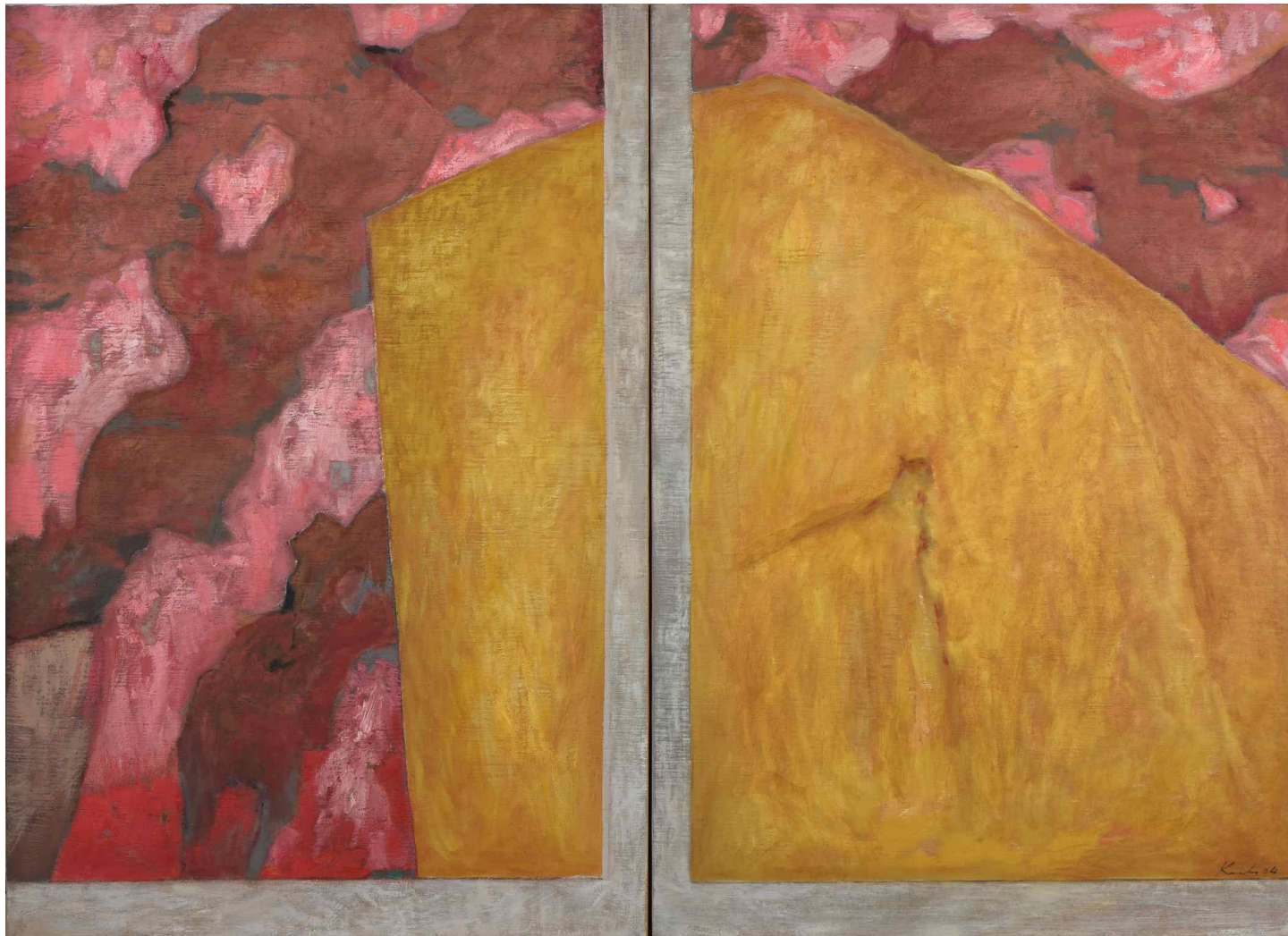
INV Nbr. KDS15110010

**Françoise
Livinec**

24, rue de Penthièvre
75008 Paris

+33 (0)1 40 07 58 09
contact@francoiselivinec.com
www.francoiselivinec.com

Xavier Krebs



Xavier Krebs

Falaise, 2004

Mixed technique on canvas

198 x 130 cm

Signed lower right

INV Nbr. XK2004_1

**Françoise
Livinec**

24, rue de Penthièvre
75008 Paris

+33 (0)1 40 07 58 09
contact@francoiselivinec.com
www.francoiselivinec.com

Zuka



Zuka

Robespierre et Danton, 1988

Oil and collage on canvas

80 x 80 cm

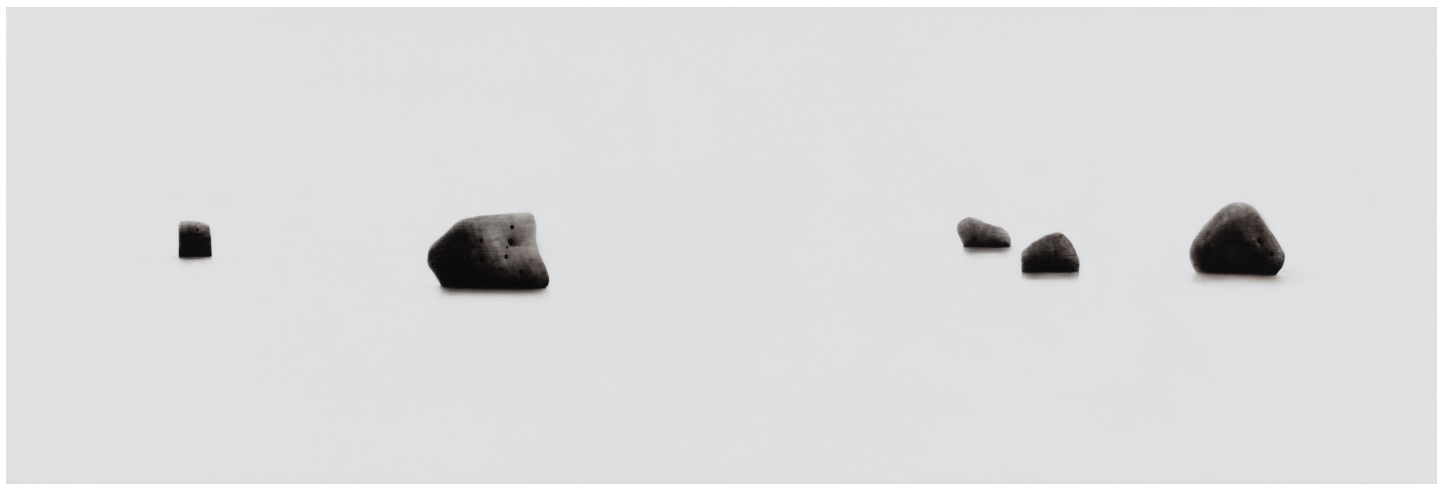
INV Nbr. Z1988_2

**Françoise
Livinec**

24, rue de Penthièvre
75008 Paris

+33 (0)1 40 07 58 09
contact@francoiselivinec.com
www.francoiselivinec.com

Choi Jun-Kun



Choi Jun-Kun

Sea, 2016

Chinese ink on canvas

30 x 90 cm

INV Nbr. CJK2016_19

Won Sou-Yeol



Won Sou-Yeol

Sans titre, 2006

Mixed technique on canvas

117 x 90 cm

INV Nbr. WSY_2006_3

Wei Ligang



Wei Ligang

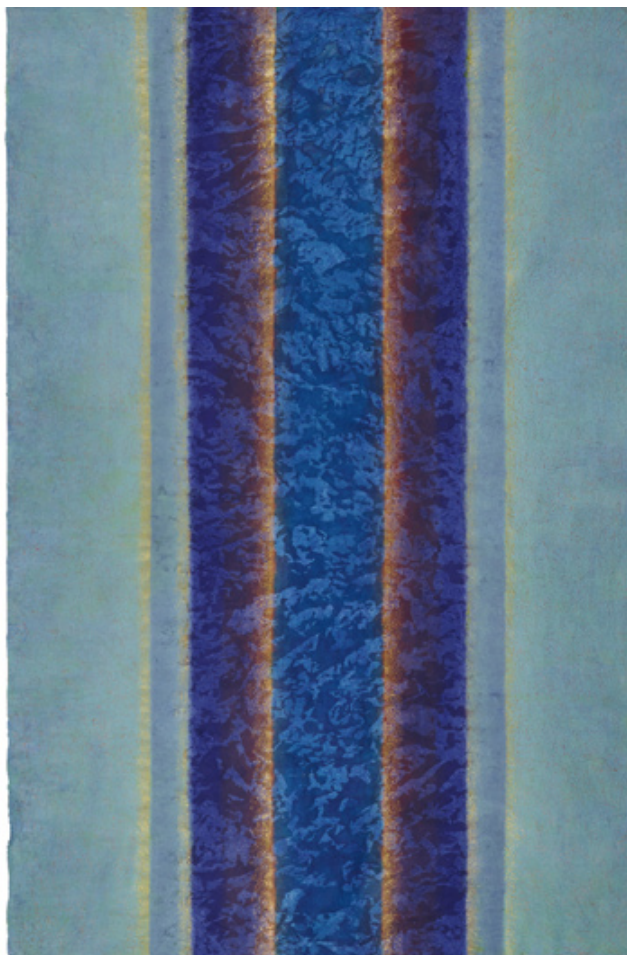
La forêt d'Huelgoat, 2013
Ink & Acrylic on Rise Paper
180 x 160 cm
INV Nbr. WL2013_2

**Françoise
Livinec**

24, rue de Penthièvre
75008 Paris

+33 (0)1 40 07 58 09
contact@francoiselivinec.com
www.francoiselivinec.com

Bang Hai Ja



Bang Hai Ja

Danse de lumière, 2015

Natural pigment on paper

177 x 117,5 cm

Signed on the back

INV Nbr. BHJ2015_4

**Françoise
Livinec**

24, rue de Penthièvre
75008 Paris

+33 (0)1 40 07 58 09
contact@francoiselivinec.com
www.francoiselivinec.com

Loic Le Groumellec



Loic Le Groumellec

Ecriture, 2012

Gouache on paper

76 x 56 cm

Signed on the back

INV Nbr. LLG15120065

**Françoise
Livinec**

24, rue de Penthièvre
75008 Paris

+33 (0)1 40 07 58 09
contact@francoiselivinec.com
www.francoiselivinec.com

Toru Hamada



Toru Hamada

T-2010-25, 2010

Oil on canvas

67 x 80 cm

INV Nbr. TH2010_1

**Françoise
Livinec**

24, rue de Penthière
75008 Paris

+33 (0)1 40 07 58 09
contact@francoiselivinec.com
www.francoiselivinec.com

René Duvillier



René Duvillier

L'eau de l'air, circa 1990

Mixed technique on canvas

116 x 89 cm

INV Nbr. RD2016_3

**Françoise
Livinec**

24, rue de Penthièvre
75008 Paris

+33 (0)1 40 07 58 09
contact@francoiselivinec.com
www.francoiselivinec.com