

## Press release

Elvire Jan

From 13 September 2024 to 05 October 2024

Opening date 12 September 2024



## Press Release

To mark the Year of Armenia in France, Françoise Livinec is pleased to present the first solo exhibition at the gallery of the Bulgarian-born artist of Armenian origin Elvire Jan (1904-1996).

"From my earliest childhood, I was uprooted. I had to find a homeland, and painting was that homeland." - Elvire Jan

All her life, Elvire Jan sought to retranscribe the topography of a landscape of warm colors and undulating reliefs, those of a dreamed-of and fantasized-about Armenia that she never knew.

Elvire Jan, daughter of the Armenian diaspora, took Persian nationality with her family in 1914, with the agreement of the Bulgarian government, to escape Turkish persecution. Her story is that of the exodus of the Armenian people, and it is a duty of remembrance to continue to tell the story of her life.

Elvire Jan



**Elvire Jan**

*Sans titre*

oil on canvas

60 x 81cm

INV Nbr. EJ2022\_07

**Françoise  
Livinec**

24,                      rue de Penthièvre  
75008 Paris

+33 (0)1 40 07 58 09  
contact@francoiselivinec.com  
www.francoiselivinec.com

Elvire Jan



**Elvire Jan**

*Sans titre*, 1993

oil on canvas

60 x 73 cm

At the bottom right

INV Nbr. EJ2022\_08

**Françoise  
Livinec**

24,                      rue de Penthièvre  
75008 Paris

+33 (0)1 40 07 58 09  
[contact@francoiselivinec.com](mailto:contact@francoiselivinec.com)  
[www.francoiselivinec.com](http://www.francoiselivinec.com)

Elvire Jan



**Elvire Jan**

*Sans titre*, c. 1990

oil on canvas

65 x 81 cm

At the bottom right and at the back

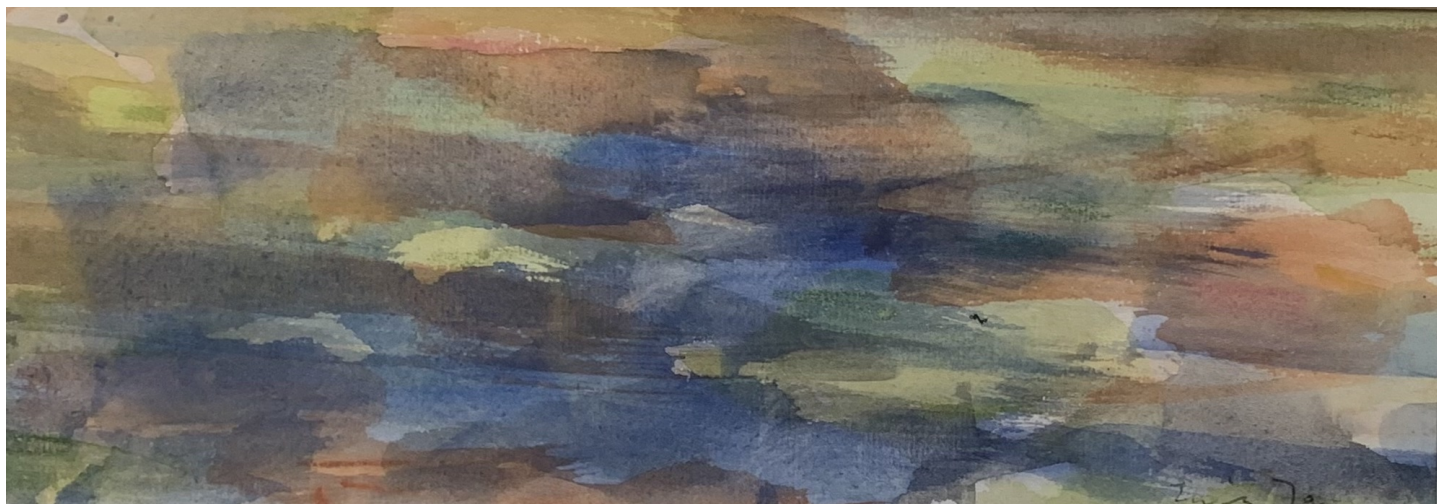
INV Nbr. EJ2022\_10

**Françoise  
Livinec**

24,            rue de Penthièvre  
75008 Paris

+33 (0)1 40 07 58 09  
[contact@francoiselivinec.com](mailto:contact@francoiselivinec.com)  
[www.francoiselivinec.com](http://www.francoiselivinec.com)

## Elvire Jan



### **Elvire Jan**

*L'Esterel*, 1968

Watercolor on paper

9 x 24 cm

Frame: 26 x 41 cm

Signed on the right corner

INV Nbr. EJ2023\_01

## Elvire Jan



### **Elvire Jan**

*Sans titre*, 1991-1994

Oil on canvas

54 x 65 cm

Signed on the lower right corner

INV Nbr. EJ2023\_07

**Françoise  
Livinec**

24,            rue de Penthièvre  
75008 Paris

+33 (0)1 40 07 58 09  
[contact@francoiselivinec.com](mailto:contact@francoiselivinec.com)  
[www.francoiselivinec.com](http://www.francoiselivinec.com)

Elvire Jan



**Elvire Jan**

*La Passion*, 1976

Oil on canvas

81 x 65 cm

Signed on the right corner

INV Nbr. EJ2023\_12

**Françoise  
Livinec**

24,                      rue de Penthièvre  
75008 Paris

+33 (0)1 40 07 58 09  
contact@francoiselivinec.com  
www.francoiselivinec.com



## Elvire Jan



### **Elvire Jan**

*Sans titre*, 1985

Oil on canvas

81 x 65 cm

Signed in the right corner

INV Nbr. EJ2023\_16

Elvire Jan



**Elvire Jan**

*Sans titre*, 1991

Oil on canvas

65 x 81 cm

Signed in the right corner

INV Nbr. EJ2023\_24

**Françoise  
Livinec**

24,            rue de Penthièvre  
75008 Paris

+33 (0)1 40 07 58 09  
[contact@francoiselivinec.com](mailto:contact@francoiselivinec.com)  
[www.francoiselivinec.com](http://www.francoiselivinec.com)

Elvire Jan



**Elvire Jan**

*Ramatuella*, 1957

Oil on canvas

33 x 32 cm

Signed on the right low corner

INV Nbr. EJ2023\_52

**Françoise  
Livinec**

24,                      rue de Penthièvre  
75008 Paris

+33 (0)1 40 07 58 09  
contact@francoiselivinec.com  
www.francoiselivinec.com