

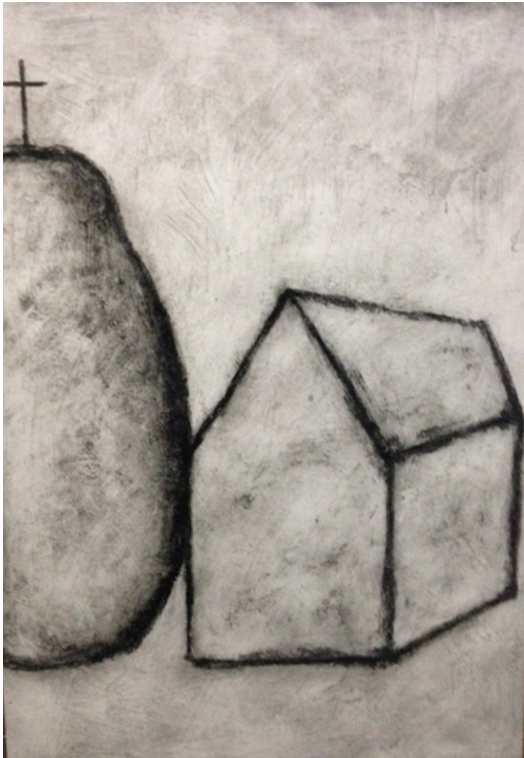
Press release

Musée privé de Philippe Le Guillou

Matthieu Dorval, René Duvillier, Madeleine Grenier, Loic Le Groumellec, Kim Tae Ho

From 22 February 2017 to 04 March 2017

Opening date 21 February 2017



Press Release

From February 21st to March 4th 2017, the Françoise Livinec gallery is pleased to present works selected by Philippe Le Guillou on the occasion of the publication of his latest book *Novembre* by Gallimard.

Extract from *Novembre*

«And death came in the middle of November, with the storm, the gusts of wind that stripped the trees, and especially the savagery that was bloody in Paris. In his descent into death, my father could not have measured this barbarism, the outbreak of warlike violence which, at the moment when his life ended, would have reminded him of the dark hours of his childhood, raids, the blind assassinations of supposedly resistant, the rain of bombs, the destruction of Brest.

Like all the old men who had a peaceful life, he looked at those times with anxiety. He had to think especially of his grandchildren who would have to face this uncertainty and violence. The period of reconstruction, of the Thirty Glorious Days, of a certain form of material bliss, of general and widespread happiness was behind us. Another war began, sneaky, unpredictable, without identified and identifiable forces.

The death of my father in the middle of the dark month, at the dividing line of this historic November which goes far beyond this painful and intimate event, corresponds with this dive into times and a world of high uncertainty. November 13th and 17th of 2015 touched me as few dates and events before. I feel forever orphaned of a permanently lost stability and hope.»

Author's word

«Publishing a new book is always a bit dizzying, especially when these are intimate texts. *Novembre* is the tribute of a son to his father, it is part of the beautiful tradition of the tombs. A place was

im **Françoise Livinec** peak of this Finistrian te 24, rue de Penthièvre and the spells of Brittany:

75008 Paris

+33 (0)1 40 07 58 09
contact@francoiselivinec.com
www.francoiselivinec.com

the gallery of Françoise Livinec. I, who have written a lot about painters and the painting, often feel the need, when I work, to be surrounded by canvases or reproductions of paintings. Artists, whose exhibited works accompanies the publication of Novembre, are part of my private museum and my imagination.

I began this book near a sky of Madeleine Grenier and a cross of Loïc Le Groumellec. It was therefore natural for me to accept the invitation of Françoise Livinec and that these artists join Duvillier, Dorval and Kim Tae Ho in what is almost the presentation of my personal universe, landscapes and figures that inspire me. Novembre, a harsh book, is surrounded in a grace and a light which alleviate its roughness, the colors and the forms prolong the words, the borders fade; Brittany, its landscapes and its smugglers resplend in Paris, far from the hazy confines, at the very heart of a place of beauty, aesthetic fraternity and anchorage in what is stronger than darkness, evil and storm: The need to give thanks and to transmit.»

Philippe Le Guillou

Exhibition View



Musée privé de Philippe Le Guillou

Matthieu Dorval, René Duvillier, Madeleine Grenier, Loic Le Groumellec, Kim Tae Ho

Exhibition View



Musée privé de Philippe Le Guillou

Matthieu Dorval, René Duvillier, Madeleine Grenier, Loic Le Groumellec, Kim Tae Ho

Matthieu Dorval



Matthieu Dorval

Tempête solide, 2016

Mixed media on canvas

73 x 114 cm

On the bottom left corner

INV Nbr. MD2016_12

**Françoise
Livinec**

24, rue de Penthièvre
75008 Paris

+33 (0)1 40 07 58 09
contact@francoiselivinec.com
www.francoiselivinec.com

Matthieu Dorval



Matthieu Dorval

Noir et bleu, 2013

Mixed technique

101 x 66 cm

INV Nbr. MD2013_1

René Duvillier



René Duvillier

Obéron, 1987 - 1988

Mixed technique on canvas

120 x 90 cm

Signed lower right

INV Nbr. RD1988_23

**Françoise
Livinec**

24, rue de Penthièvre
75008 Paris

+33 (0)1 40 07 58 09
contact@francoiselivinec.com
www.francoiselivinec.com

René Duvillier



René Duvillier

L'eau de l'air n°6, 1995

Mixed technique on canvas

170 x 130 cm

Signed on the back

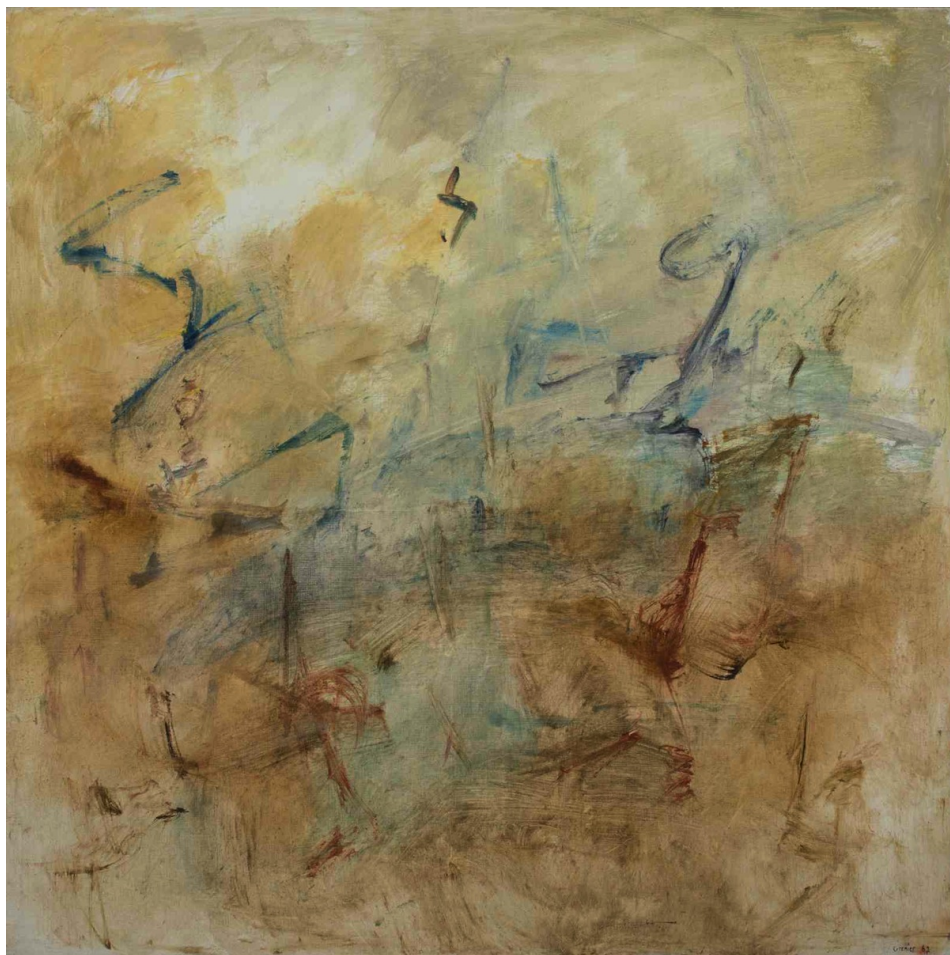
INV Nbr. RD1995_34

**Françoise
Livinec**

24, rue de Penthièvre
75008 Paris

+33 (0)1 40 07 58 09
contact@francoiselivinec.com
www.francoiselivinec.com

Madeleine Grenier



Madeleine Grenier

Petits vers marins, 1967

Huile sur toile

INV Nbr. MG15120007

**Françoise
Livinec**

24, rue de Penthièvre
75008 Paris

+33 (0)1 40 07 58 09
contact@francoiselivinec.com
www.francoiselivinec.com

Madeleine Grenier



Madeleine Grenier

Ciel, 1962

Huile sur toile

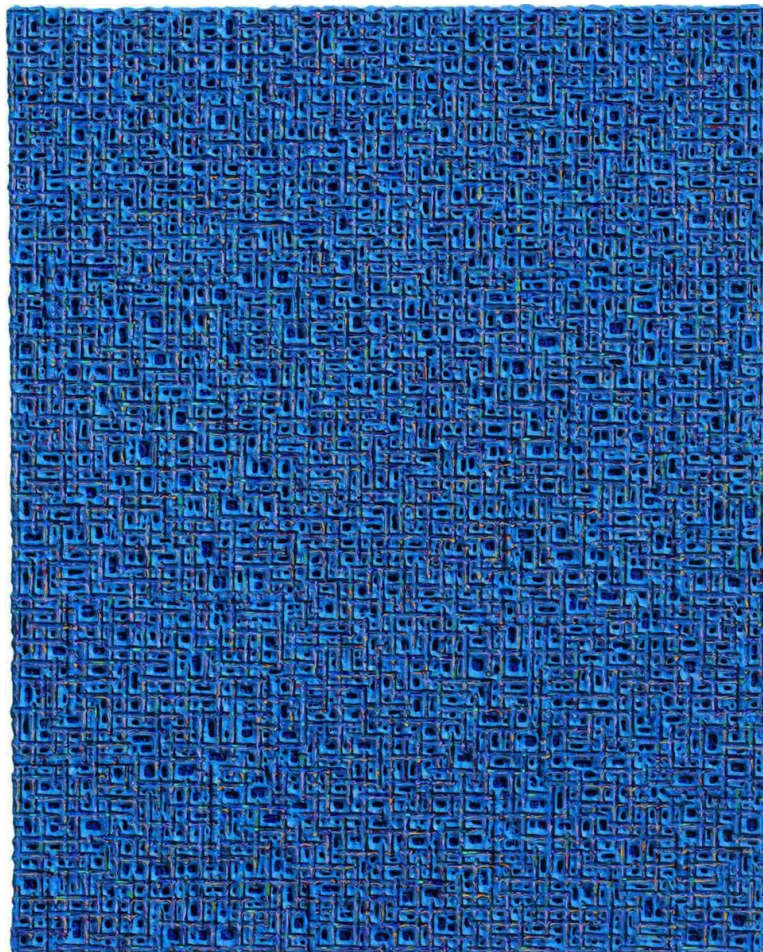
INV Nbr. MG15120004

**Françoise
Livinec**

24, rue de Penthièvre
75008 Paris

+33 (0)1 40 07 58 09
contact@francoiselivinec.com
www.francoiselivinec.com

Kim Tae Ho



Kim Tae Ho

Internal Rhythm 2015-9, 2015

Acrylic on canvas

91,5 x 73 cm

Signed on the back

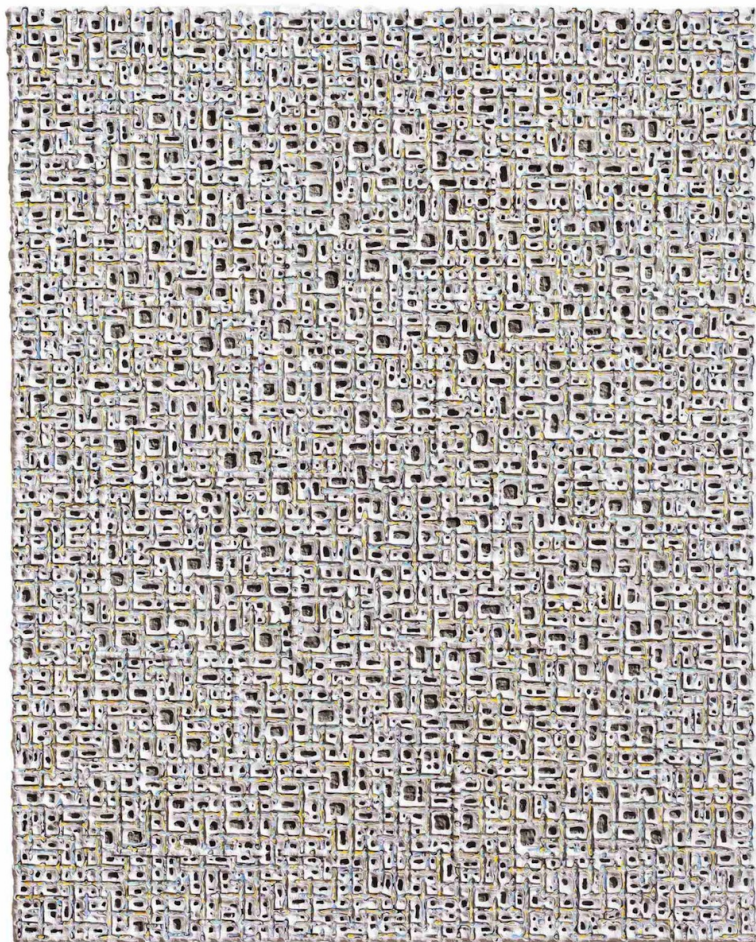
INV Nbr. KTH16010001

**Françoise
Livinec**

24, rue de Penthièvre
75008 Paris

+33 (0)1 40 07 58 09
contact@francoiselivinec.com
www.francoiselivinec.com

Kim Tae Ho



Kim Tae Ho

Internal Rhythm 2015-7, 2015

Acrylic on canvas

91,5 x 73,3 cm

INV Nbr. KTH16010004

Loic Le Groumellec



Loic Le Groumellec

Mégalithes et maison, 2008

Lacquer on canvas

120 x 110 cm

Signed on the back

INV Nbr. LLG15110024

**Françoise
Livinec**

24, rue de Penthièvre
75008 Paris

+33 (0)1 40 07 58 09
contact@francoiselivinec.com
www.francoiselivinec.com

Loic Le Groumellec



Loic Le Groumellec

Ecriture, 2012

Gouache on paper

76 x 56 cm

Signed on the back

INV Nbr. LLG15120065

**Françoise
Livinec**

24, rue de Penthièvre
75008 Paris

+33 (0)1 40 07 58 09
contact@francoiselivinec.com
www.francoiselivinec.com